

Power UV-A LED Black Light

BL-10000



- Power UV LED LAMP
- White LED LAMP
- Free Voltages (Selector Type)
- UV LED LAMP 자외선강도
38cm : 10,000 $\mu\text{W}/\text{cm}^2$ 이상
60cm : 8,000 $\mu\text{W}/\text{cm}^2$ 이상
- FPI와 MPI에 대한 ASTM의 UV-A의 강도와 파장을 충족
- UV LED 를 사용 대기시간 없이 POWER ON과 동시에 강력한 자외선이 출력 신속한검사 가능
- 각 Channel 별 LAMP 제어 (정전류,정전압 방식)
(UV LAMP : 10CH WHITE LAMP : 2 CH) (LED 교체시 개별 교체 가능 , Connector Type)
- UV LAMP와 WHITE LAMP 2가지 모드로 선택가능

제품 사양

전원 / 주파수	AC 100~120V , 200~240V 50/60Hz (Selector Type)		
LED 전원 (SMPS)	DC 24V		
소 비 전 력	150W		
UV LAMP	12W 10 EA (365nm)	자외선 강도	38cm : 10,000 $\mu\text{W}/\text{cm}^2$ 이상
	LENS : 21.6 X 21.6mm (10°)		60cm : 8,000 $\mu\text{W}/\text{cm}^2$ 이상
WHITE LAMP	3W 2EA	조 도	38cm : 4,000 Lux 이상
	LENS : 20 Ø (10°)		60cm : 2,000 Lux 이상
Viewing window	415 (L) X 75 (W)mm		
무 게	9.5 kg		
크 기	445 (L) X 350 (H) X 160 (W)mm (거치대 포함)		



경도양행(주)
KYUNGDO ENTERPRISE CO.,LTD.

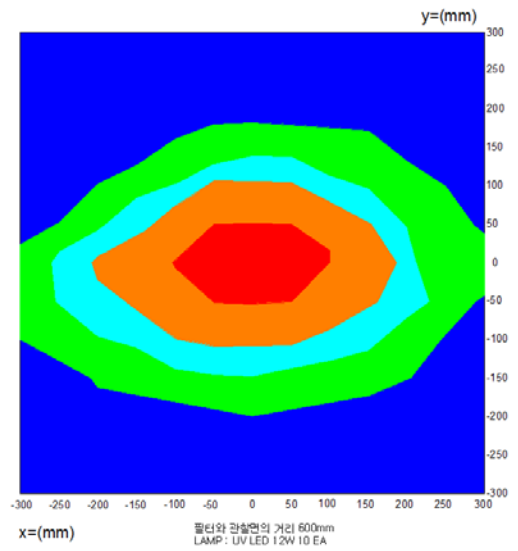
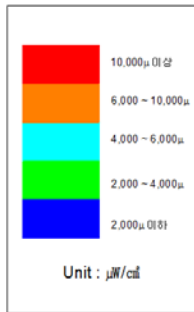
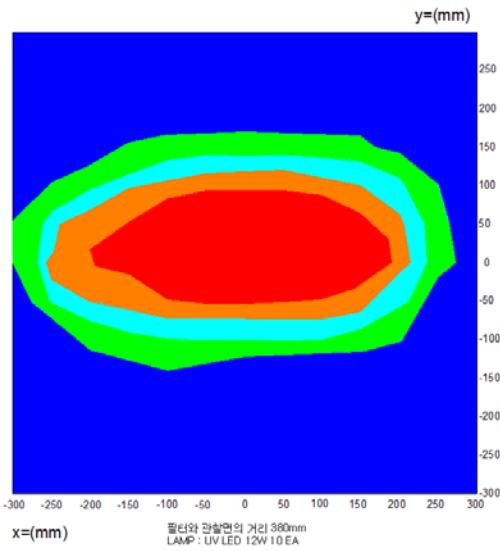
135-916 서울특별시 강남구 역삼동 봉은사로 50길 45

Tel. 82-2-555-7005 Fax. 82-2-555-6005

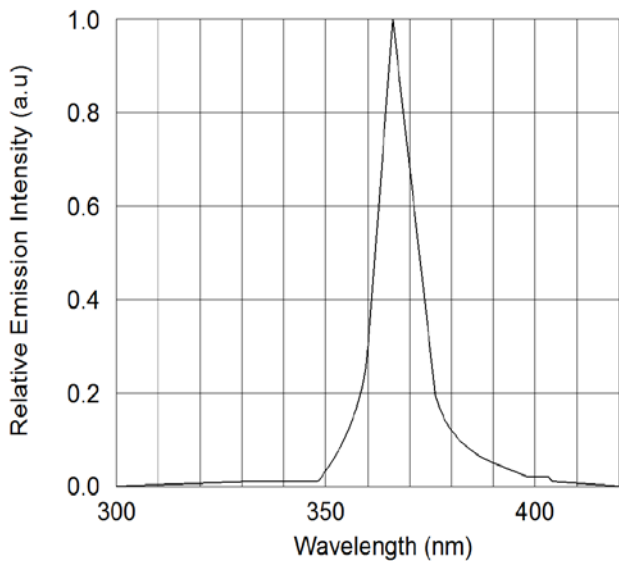
www.kdndt.com

Technical Date BL-10000

• UV-A 자외선 분포도



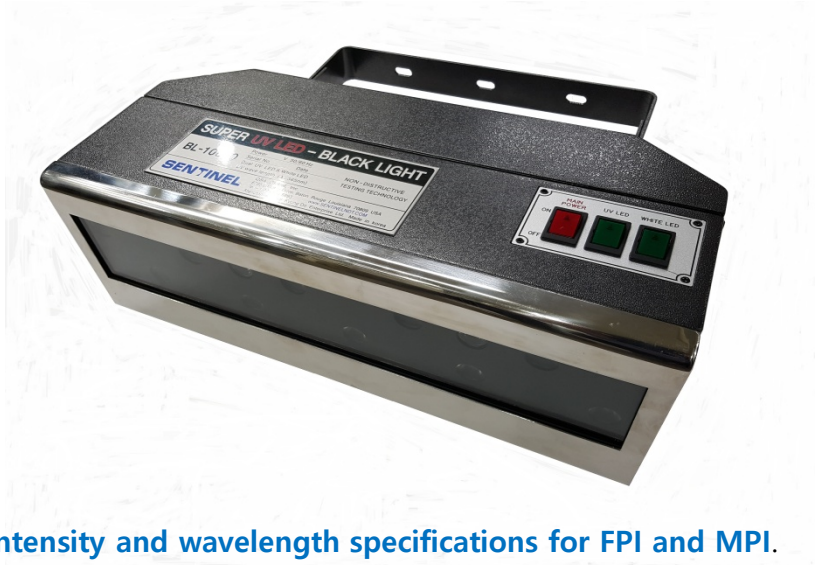
• Spectrum



Power UV-A LED Black Light

BL-10000

- Power UV LED LAMP
- White LED LAMP
- Free Voltages (Select Type)
- UV Intensity of UV LED LAMP
At 38cm : 10,000 $\mu\text{W}/\text{cm}^2$ Over
At 60cm : 8,000 $\mu\text{W}/\text{cm}^2$ Over
- Compliance with ASTM UV-A intensity and wavelength specifications for FPI and MPI.
- Strong UV out-put when the power turns on without waiting and No Need Warming up time.
- Available to select the mode both UV Lamp and White Lamp.



Features

Power Source	Free Volt 50/60Hz (Select Type)		
LED Power (SMPS)	DC 24V		
Power Consumption	250W		
UV LAMP	12W 10 EA (365nm)	Ultraviolet intensity	38cm : 12,000 $\mu\text{W}/\text{cm}^2$ Over
	LENS : 21.6 X 21.6mm (10°)		60cm : 8,000 $\mu\text{W}/\text{cm}^2$ Over
WHITE LAMP	3W 2EA	illumination	38cm : 4,000 Lux Over
	LENS : 20 Ø (10°)		60cm : 2,000 Lux Over
Viewing window	415 (L) X 75 (W)mm		
Weight	9.5 kg		
Dimensions	445 (L) X 350 (H) X 160 (W)mm		



경도양행(주)
KYUNGDO ENTERPRISE CO.,LTD.

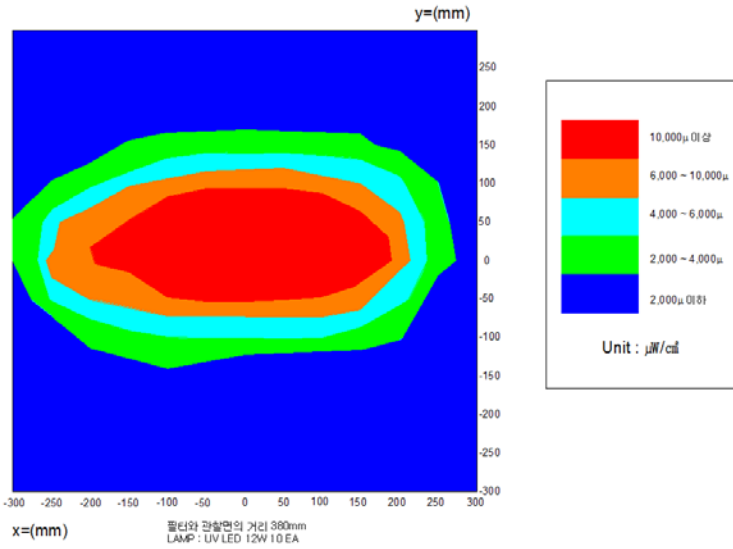
135-916 서울특별시 강남구 역삼동 봉은사로 50길 45

Tel. 82-2-555-7005 Fax. 82-2-555-6005

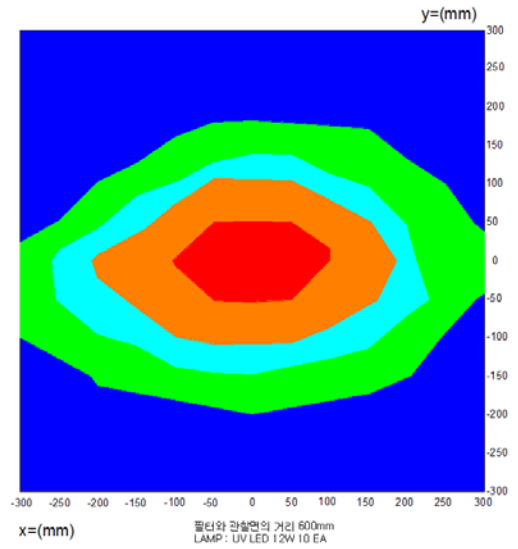
www.kdndt.com

Technical Date BL-10000

• BEAM IRRADIANCE PROFILE AT 15" (38cm)



• BEAM IRRADIANCE PROFILE AT 24" (60cm)



• Spectrum

